

Wallbox2mp3

Turn your wallbox into jukebox

WALLBOX2MP3 SOFTWARE version 2

To use the wallbox2mp3, you must download our software:

<http://www.wallbox2mp3.com/en/software/>

The V2 version is available for wallbox2mp3 v1.4bis and v1.5 only

1. How to use the software

When launching the software, you must choose your wallbox and the version of your wallbox2mp3:

Wallbox2mp3

English French Nederlands

It's so easy and quick

Turn your wallbox into jukebox

You are now going to build your playlist, print labels, configure the sdcard to fit your wallbox in few minutes

Please pay attention :
In order to finish the process, we are going to need!
to modify the root of your SDcard, just remember to save your datas first

Which Wallbox are we going to build a playlist to ?

Packard / Buckley (24 Selections)

Which version emulator are you using ?

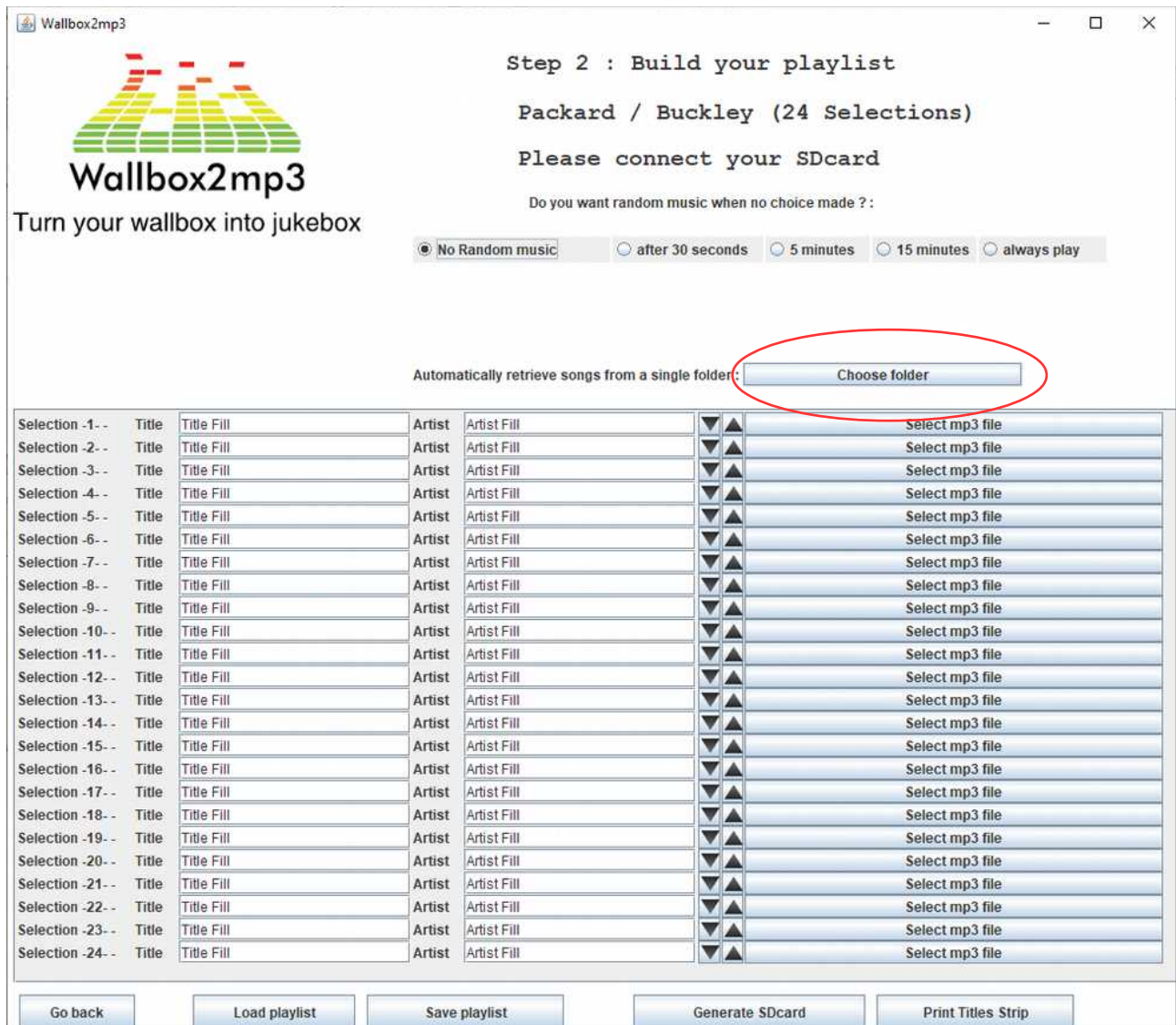
V1.4bis

Continue with playlist

You can choose an interface in French, in English or in nederlands

Step 2 allows you to make your playlist:

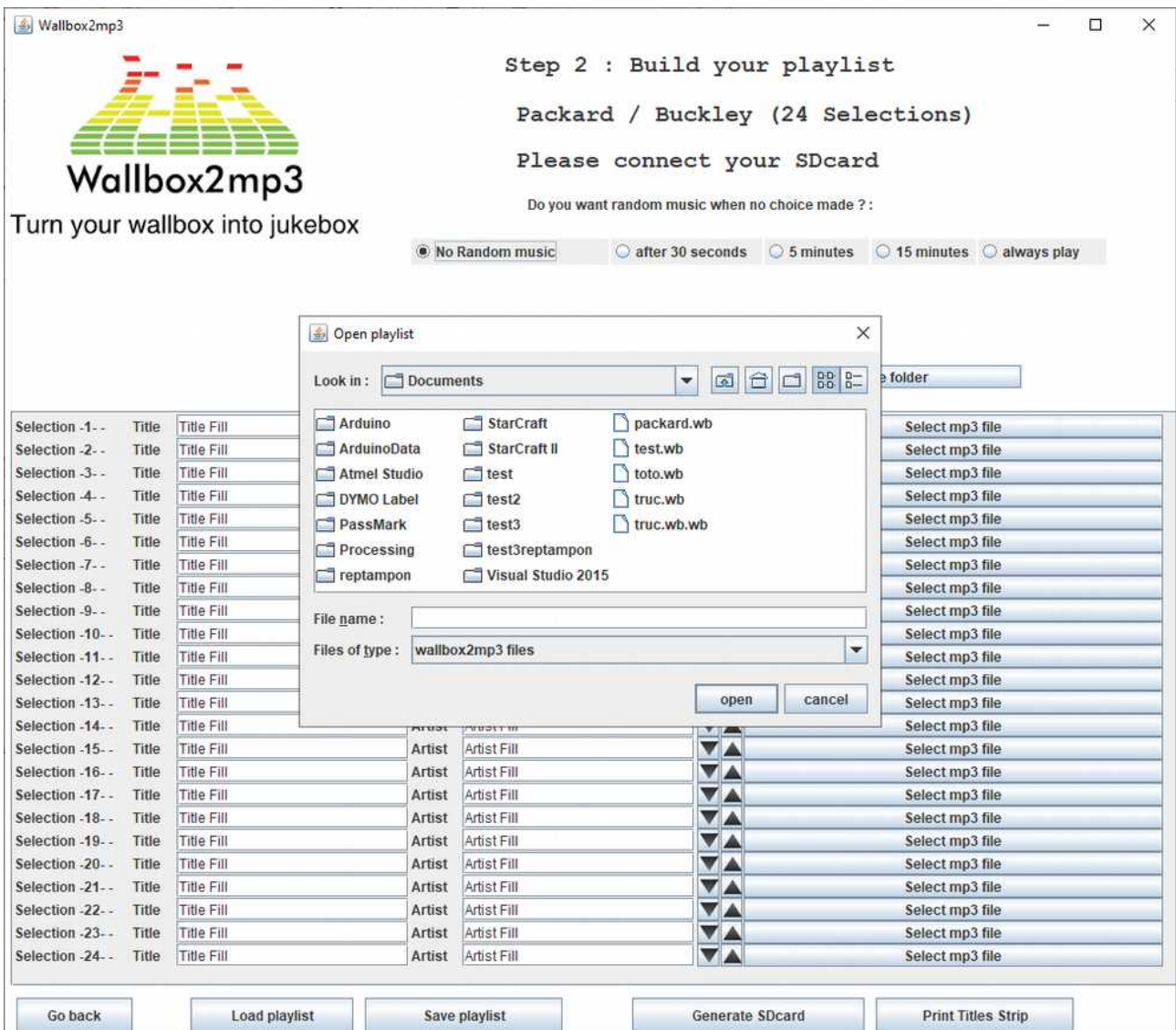
You can choose an option to have your wallbox2mp3 play music randomly or not.



You can choose a directory containing all of your mp3s which will be automatically recovered in the software wallbox2mp3.

You can also save a playlist, **be careful, the random music options and the choice of your playlist will not be saved!**

Indeed, if you want to be able to use your playlist with another wallbox, this will be possible..



You can save a playlist, which you can then continue to add to later. Please note, the wallbox and random music choices are not saved

The screenshot shows the Wallbox2mp3 application window. The title bar reads "Wallbox2mp3". The main window has a logo on the left and text on the right: "Step 2 : Build your playlist", "Packard / Buckley (24 Selections)", "Please connect your SDcard", and "Do you want random music when no choice made ?:". Below this text are radio buttons for "No Random music" (selected), "after 30 seconds", "5 minutes", "15 minutes", and "always play".


In the center, a "Save playlist" dialog box is open, showing the "Documents" folder. It contains a list of files and folders: Arduino, ArduinoData, Atmel Studio, DYMO Label, PassMark, Processing, reptampon, StarCraft, StarCraft II, test, test2, test3, test3reptampon, Visual Studio 2015, packard.wb, test.wb, toto.wb, truc.wb, and truc.wb.wb. The "File name" field is empty, and "Files of type" is set to "wallbox2mp3 files". "save" and "cancel" buttons are at the bottom.

Below the dialog box, a table lists 24 selections. Each row has columns for "Selection", "Title", "Artist", and "Album". The "Title" and "Artist" columns contain "Title Fill" and "Artist Fill" respectively. To the right of the table are 24 "Select mp3 file" buttons.

At the bottom of the application window are five buttons: "Go back", "Load playlist", "Save playlist", "Generate SDcard", and "Print Titles Strip".

You can then print your titlestrips :


Print your titlestrips



Wallbox2mp3
Turn your wallbox into jukebox

Last Step - Verify and print
Your Titlestrips


Titlestrip Style :



Font Type :
Times regular

Font Color :
Black

Preview :



Also Print the complete list of your selections separately

Go back

Build TitleStrips in PDF

And finally configure your SD card:

SD Configuration



Wallbox2mp3
Turn your wallbox into jukebox

Last Step

We are now going to configure your SDcard
with provided informations.

Please pay attention : the root of your SDcard is going to be modified
If needed,Don't forget to save your datas first

Please choice the drive where is your SDCard

Lecteur USB (E:)

Configure selected SDCard

On your SD card is:

- a configuration file
- all of your renamed mp3s
- a CSV file with the list of your music / artists and the name of the selections
- an M00.sel (or M21.sel) file. This file allows you to adjust the selections if your wallbox has a selection offset

example :

The selections are indexed by letter then by number.

The selection A1 therefore corresponds to the file sel001.mp3

The selection A2 corresponds to the file sel002.mp3

The selection A3 corresponds to the file sel003.mp3

For example for a Seeburg sc-1 160 selections whose selections range from A to V and from 1 to 8 (inclusive):

A1 therefore corresponds to the file sel001.mp3

B1 corresponds to sel009.mp3

B2 corresponds to sel010.mp3

B8 corresponds to sel016.mp3

C1 corresponds to sel017.mp3, etc

You realize that A1 (sel001) plays C1 (sel017), you can adjust by renaming the file M00.sel to M16.sel (minus 16 selections) so that the selection played is the right one

Similarly in the other direction if C1 (sel017) plays A1 (sel001), you can adjust by renaming the file M00.sel to P16.sel (plus 16 selections) so that the selection played is the right one

Please note, there should only be one .sel file on the SD card

2. How to create new title strip

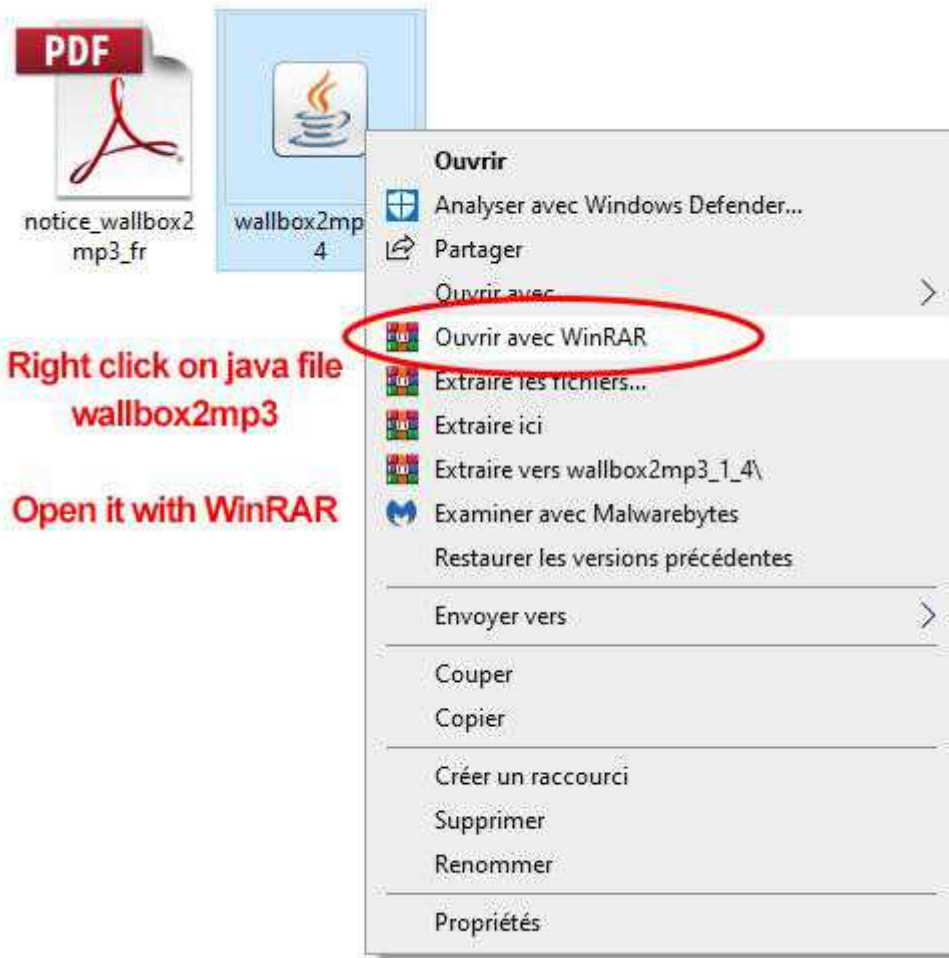
This procedure is for PC owner under Windows.

Download Wallbox2mp3 V1.5 software (jar exec) available in the folder SOFTWARE on this website.

Download WinRAR free trial (from any reliable source) and install it.

Go to the folder where you have downloaded the java file.

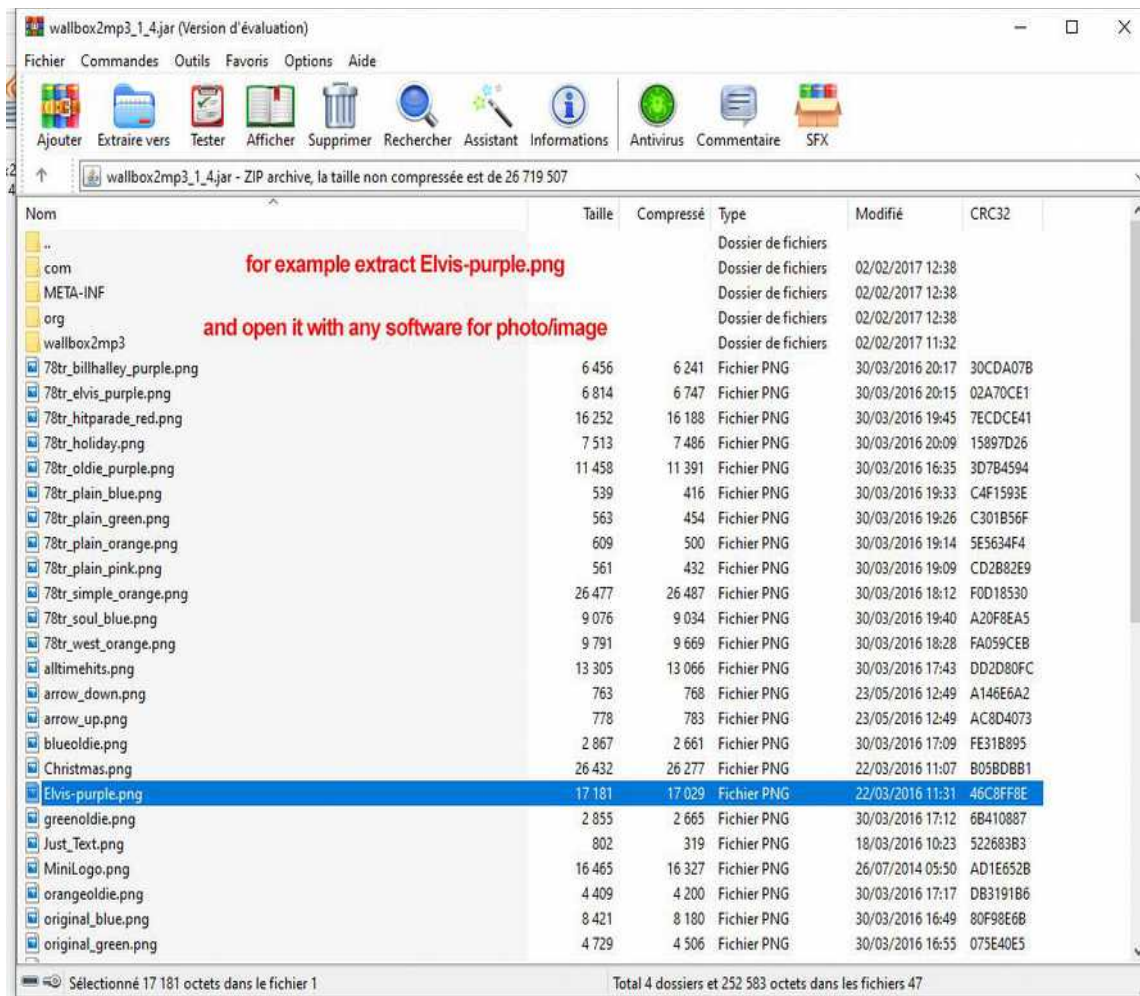
Right click on it and choose OPEN WITH WinRAR



And you'll be able to see png files. These image files are the title-strips.

For example choose "Elvis-purple.png" and extract it to your computer.

Open it with any image software : Photoshop, Paint...



Make your own color, design, choose what you like.

And save this file with same name and same extension.

Now upload this modified png file to the same place using WinRAR, or drag and drop in opened WinRAR window.

Now open the java file “wallbox2mp3” by double clicking on it.

And when you’ll go to “Print Strip Titles for my playlist”, scroll down and you’ll see your own strip !

Retroelectronik

Courriel : contact@wallbox2mp3.com

WEB SITE <https://www.wallbox2mp3.com>

WEB SITE <https://www.r2tronik.com>

FACEBOOK PAGE <https://www.facebook.com/retroelectronik.supergun>